

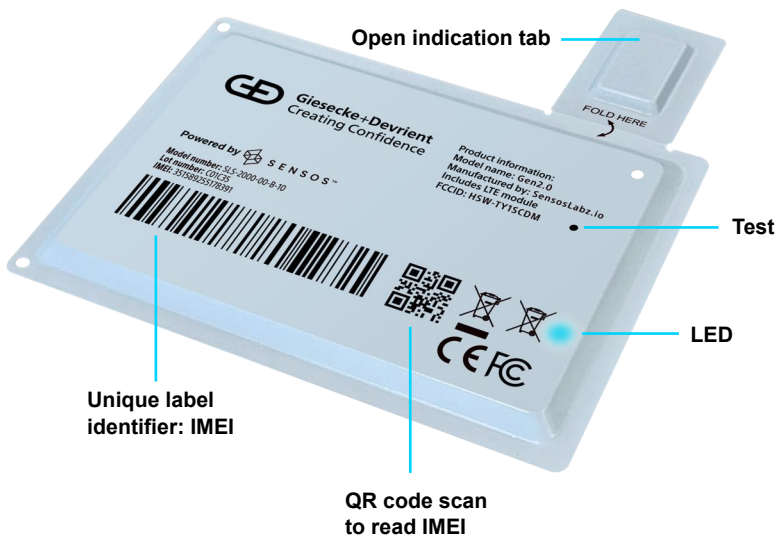


Smart Label

Transform any Package into an IoT Device








With best-in-industry tracking capabilities packed into a device only slightly larger than a credit card, G+D's label redefines convenience and efficiency in location tracking. Offering GPS accuracy for global coverage, along with condition monitoring including temperature, our label ensures the safety and integrity of your assets at every stage.

Smart motion sensors detect movement and acceleration, while its zero-touch activation eliminates the need for training or maintenance. Equipped with an open-close sensor for tamper-protection and automated proof of delivery, our label guarantees security and accountability. With customizable reporting frequencies and agile cloud-based configuration, our label adapts to your specific business needs seamlessly.



Product Specifications

Device Capabilities

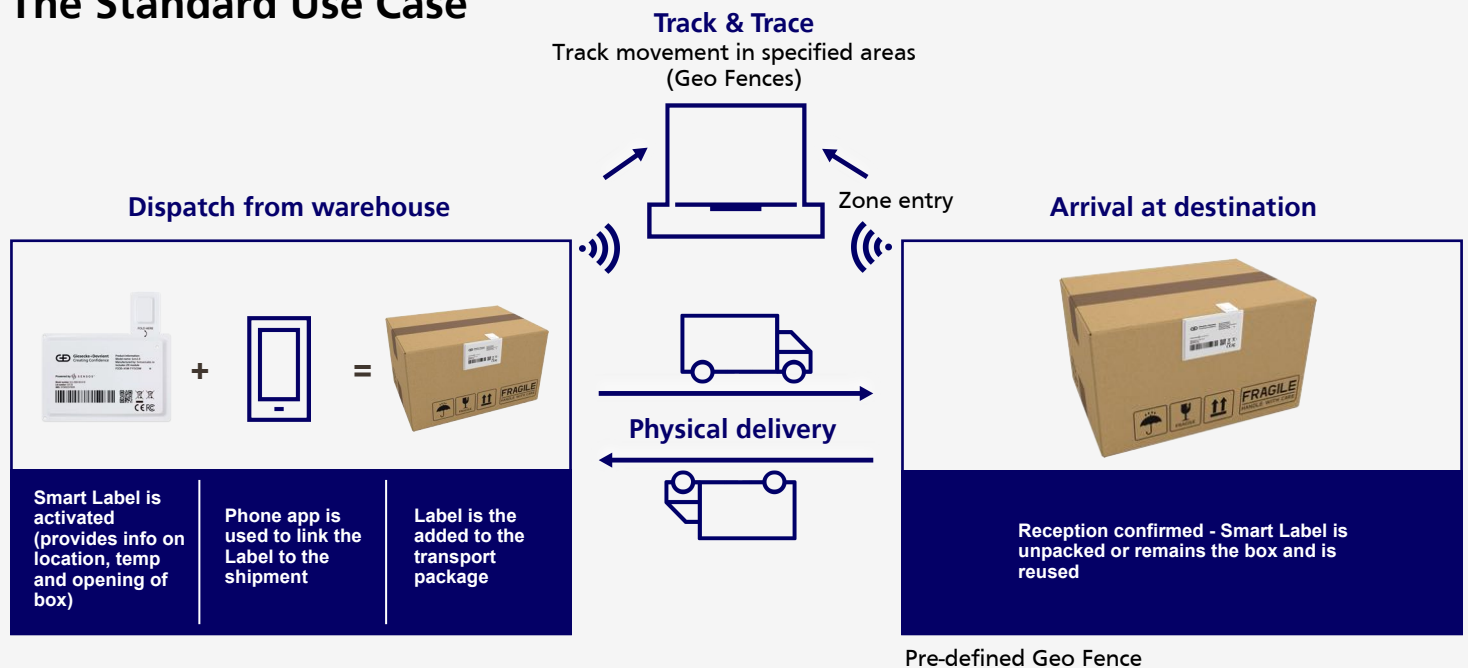
-  **Location Tracking**
across the globe with GPS accuracy
-  **Condition Monitoring**
including Shock and Temperature
-  **Zero Touch**
the device is automatically activated when applied, no training or maintenance needed
-  **Open-Close Sensor**
supports tamper-protection and automatic proof of delivery/consumption
-  **Smart Reporting**
any frequency between every 10 min. to once a month, based on predefined business logic
-  **Flexible and Agile**
configure (and reconfigure) any single label or batch from the cloud in seconds
-  **Flight-Safe**
approved for flight by tier-one cargo airlines

Technical Details

Feature	Specifications
Dimensions / Weight	107 x 72 x 3.4 mm / 24 g
Communication Type	LTE CAT-M / NB-IoT Countries Covered by Smart Label
Battery	Non-hazardous, disposable long-life lithium battery. No declaration needed for air-freight.
Ingress Protection Rating	IP64

Feature	Specifications
Environmental Conditions	-20 °C to 60 °C
Sensors	Location, Movement, Shock, Open Indication
Location Method	Cellular Triangulation + GPS
Certifications	CE, FCC, RoHS, REACH, CP65 Approved Airlines Smart Label

The Standard Use Case

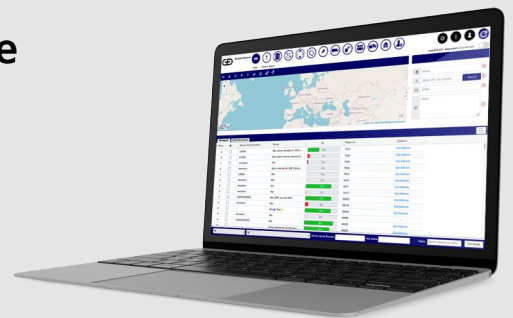


Manage and monitor your assets on the move

The **Track-Fleet** management platform is the ideal complement to your G+D IoT hardware products.

Monitor, track and manage your assets on the move.

Alternatively, G+D's Track and Trace hardware can also be integrated into your existing monitoring system.



Giesecke+Devrient

Giesecke+Devrient Mobile Security Germany GmbH
Prinzregentenstrasse 161
81677 Munich
Germany

www.gi-de.com
connectivity@gi-de.com

© Giesecke+Devrient Mobile Security Germany GmbH, 2024
Version: MKT December 2024

Follow us on:

