



Giesecke+Devrient

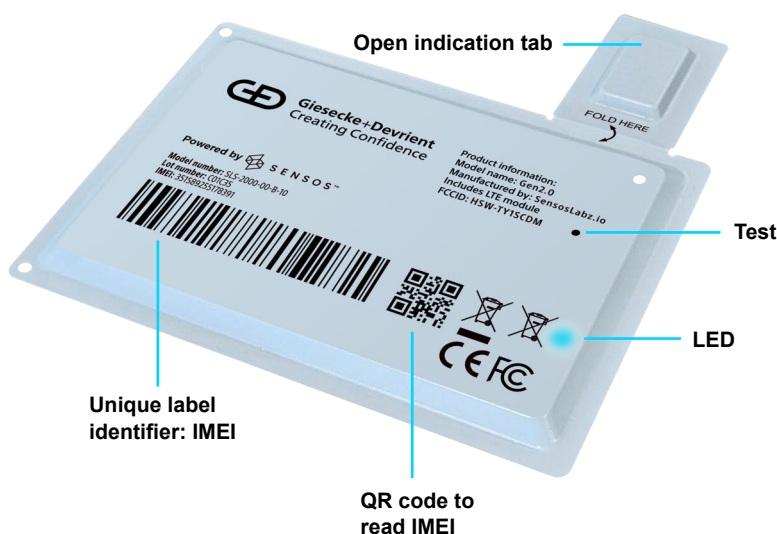


# IoTgo® Smart Label

## Transform any Package into an IoT Device

With best-in-industry tracking capabilities packed into a device only slightly larger than a credit card, G+D's Smart Label redefines convenience and efficiency in location tracking. Offering GPS accuracy for global coverage, along with condition/temperature monitoring, shock detection, and more. Our Smart Label ensures the safety and integrity of your assets at every stage.

Simply peel off the back to activate the smart label and attach it to the parcel for immediate use. Equipped with an open-close sensor for tamper-protection and automated proof of delivery, along with smart motion sensors to detect movement and acceleration, our label guarantees security and accountability. With customizable reporting frequencies and agile cloud-based configuration, our label adapts to your specific business needs seamlessly.



## Product Specifications

### Device Capabilities



**Location Tracking**  
Across the globe with GPS



**Condition Monitoring**  
Including Shock and Temperature



**Peel and Play**  
Simply peel off the back to activate the Smart Label. Attach the label to the parcel and start using it immediately



**Open-Close Sensor**  
Supports tamper-protection and automatic proof of delivery/consumption



**Smart Reporting**  
Any frequency between every 10 minutes to once a month, based on predefined business logic



**Flexible and Agile**  
Configure (and reconfigure) any single label or batch from the cloud in seconds



**Flight-Safe**  
Approved for flight by tier-one cargo airlines



Reliable Hardware



IoT-agnostic Platform



Real-time Tracking

# Technical Details

Feature	Specifications
Dimensions / Weight	107 x 72 x 3.4 mm / 24 g
Communication Type	LTE CAT-M / NB-IoT <a href="#">Countries Covered by Smart Label</a>
Battery	Non-hazardous, disposable long-life lithium battery. No declaration needed for air-freight.
Ingress Protection Rating	IP64

Feature	Specifications
Environmental Conditions	-20 °C to 60 °C
Sensors	Location, Movement, Shock, Open Indication, Temperature
Location Method	Cellular Triangulation + GPS
Certifications	CE, FCC, RoHS, REACH, CP65 <a href="#">Approved Airlines Smart Label</a>

## 1 Activate and check the label

Peel off the back to activate the Smart Label. A blinking light confirms that it is working.



## 2 Attach to package

Attach the label to the parcel.



## 3 Track your shipment

Monitor location, shock, temperature, and opening in real-time



## 4 Recycle the label

After use, please recycle the label according to local regulations.

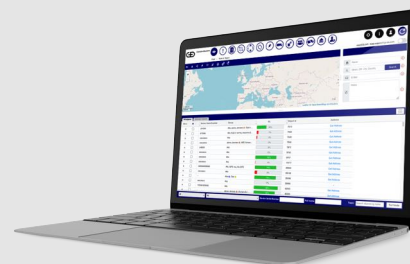


## Manage and monitor your assets on the move

The **IoTgo® Track-Fleet** management platform seamlessly integrates with your G+D IoT hardware products.

Monitor, track and manage your assets on the move.

Alternatively, G+D's Track and Trace hardware can also be integrated into your existing monitoring system.



**Giesecke+Devrient**

Giesecke+Devrient Mobile Security Germany GmbH  
Prinzregentenstrasse 161  
81677 Munich  
Germany

[www.gi-de.com](http://www.gi-de.com)  
[connectivity@gi-de.com](mailto:connectivity@gi-de.com)

© Giesecke+Devrient Mobile Security Germany GmbH, 2024  
Version: MKT February 2025

Follow us on:

